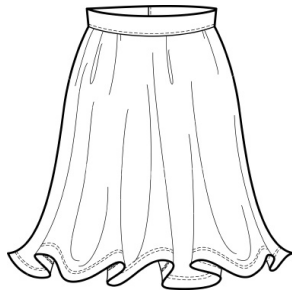
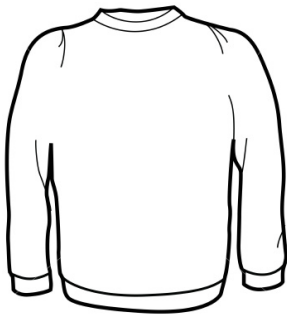
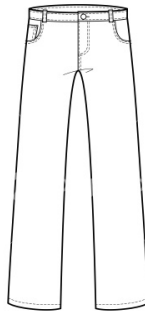
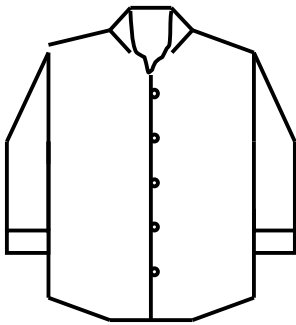


## Stain Treatment Form

Directions:

1. Please indicate the location of the stain(s) on your garment(s) below.
2. Place this form in a plastic bag along with the garment(s) in need of stain removal.
3. Seal plastic bag and place in your laundry bag.



\*If stains are on the backside of the garment(s), please note.

\*\*If garment type is not found on this list, please make a note of garment type and stain location.